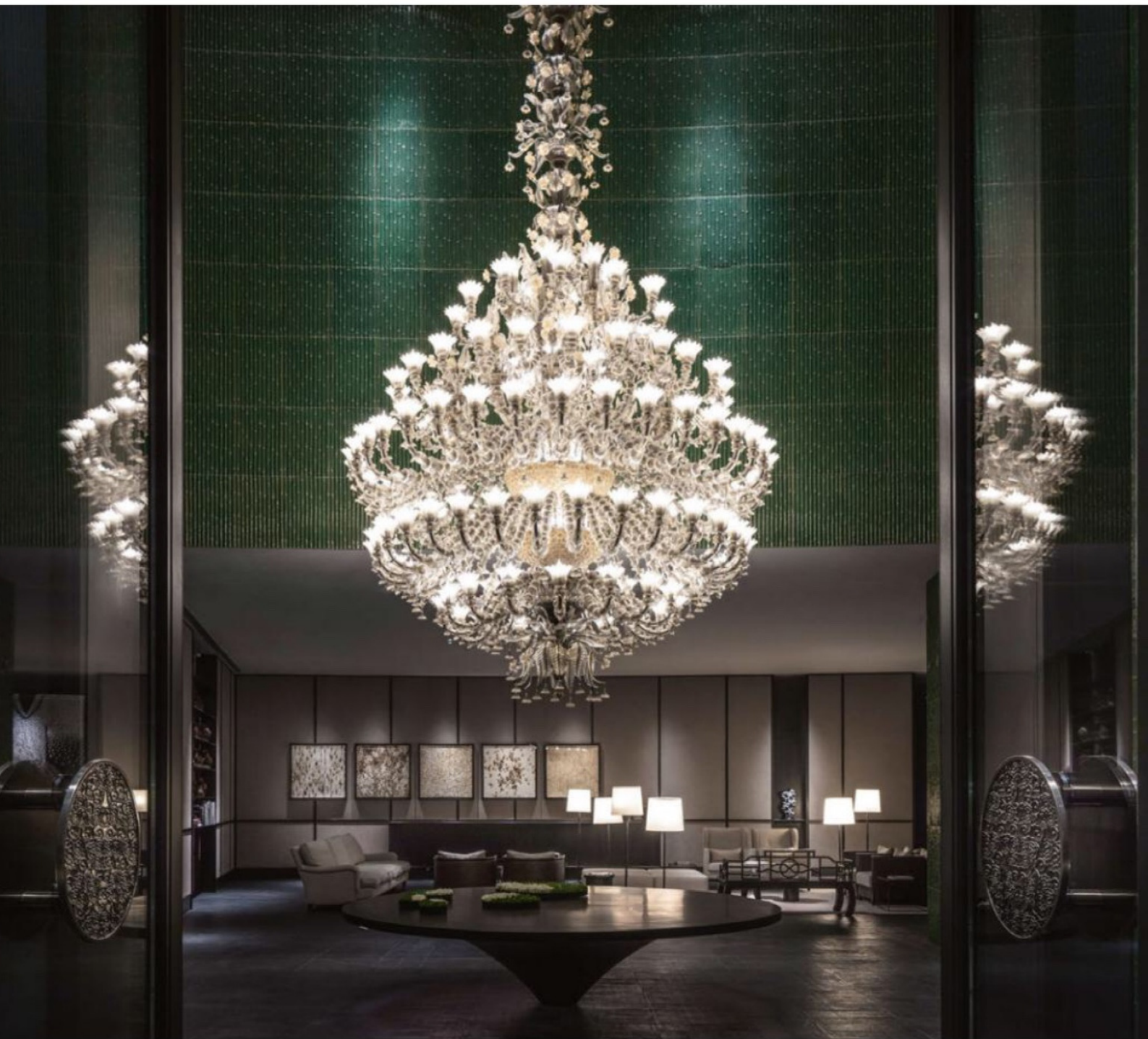


# SLEEPER

GLOBAL HOTEL DESIGN

SEPTEMBER | OCTOBER 2018



## The Middle House

re's House Collective lands in Shanghai with east-meets-west scheme by Piero Lissoni

## Priya Paul

The leading lady of India's boutique hotel sector talks form, function and having fun

## Bikini Island & Mountain Hotel

The team behind 25hours Hotels set their sights on reinventing the leisure sector



**FROST**  
Unu Wash Table

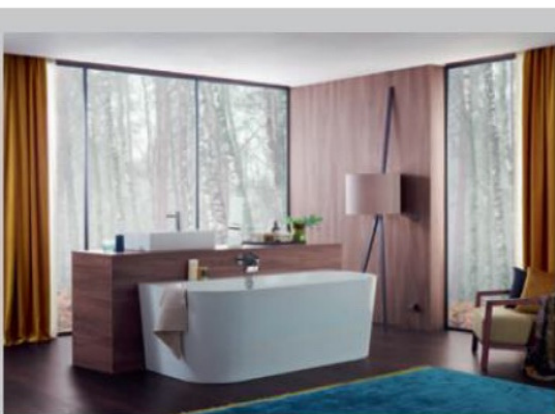
The Unu Wash Table from Frost can be customised according to specified drawings, while laser cuttings for pipes and mixers are also available on request. Featuring a shelf load of 80kg, the table is complemented by the brand's Round Mirrors, which feature slender-edged profiles and are powder-coated in black or white. The Nova2 bathroom accessories, meanwhile, have been designed by Bønnelycke MDD and come in six finishes including original copper, modern gold and pure white.

[www.frost.dk](http://www.frost.dk)

**LAUFEN**  
Sonar

Laufen has collaborated with Spanish designer Patricia Urquiola to create Sonar, a series that introduces the third generation of its SaphirKeramik material. Incorporating floor-standing and wall-mounted washbasins, as well as a bathtub crafted from Sentec ceramic, the series explores the functional and decorative properties of SaphirKeramik, with washbasin bowls featuring three-dimensional textures that can be selected as an optional alternative to traditionally smooth surfaces.

[www.laufen.co.uk](http://www.laufen.co.uk)



**VILLEROY & BOCH**  
Oberon

Expanding its original Oberon collection to include three new bathtubs, Villeroy & Boch has launched a series of models with central outlets for the first time. Oberon 2.0 comprises a built-in bathtub in two sizes as well as a space-saving rear wall model, which is supplied with a coloured panel that can be customised in a selection of Sikkens, NCS and RAL shades.

[www.villeroy-boch.co.uk](http://www.villeroy-boch.co.uk)

**TUBES**  
Elements

The Elements range from Tubes is characterised by a lightweight aluminium structure of just 28mm thickness. Sculpted in rectangular and squared shapes, and available in water or electric versions, the collection's square models can be installed vertically and horizontally, and distribute heat evenly using a finned back plate. For additional functionality, a co-ordinated element featuring an electric towel warmer can be combined with the radiating unit.

[www.tubesradiatori.com](http://www.tubesradiatori.com)

